

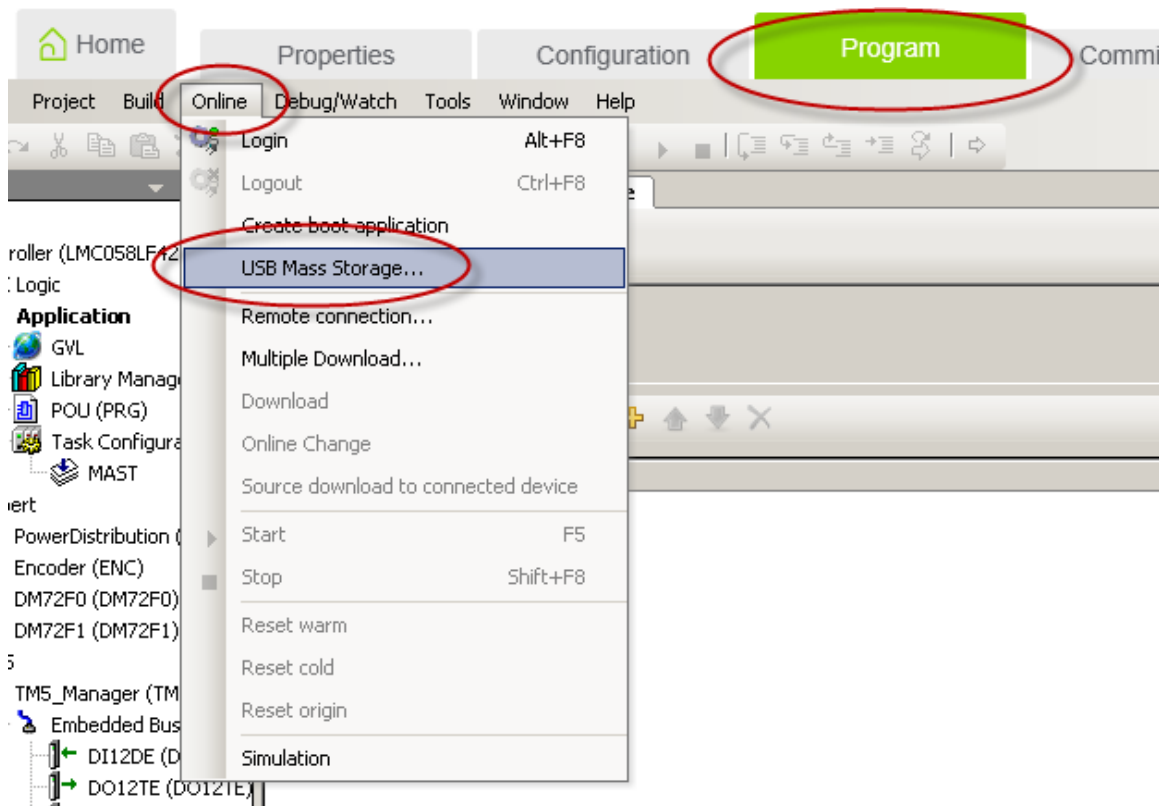
## HOW TO DOWNLOAD AN APPLICATION TO A M258 OR LMC058 USING AN USB FLASH DRIVE

This document describes the procedure on how to download a SoMachine program to a M258 Logic Controller or LMC058 Motion Controller and put the controller into RUNNING state.

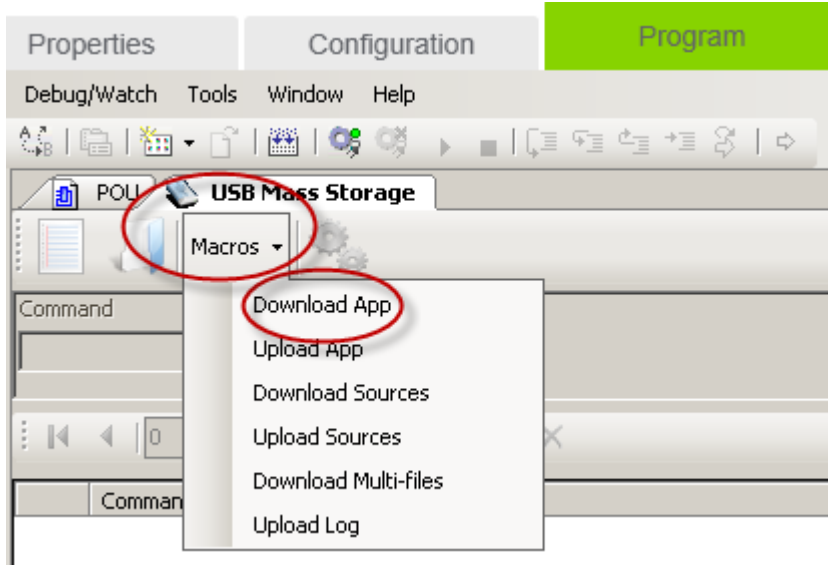
Software used: SoMachine Version 3.0.14.5

Given below is the step by step procedure:

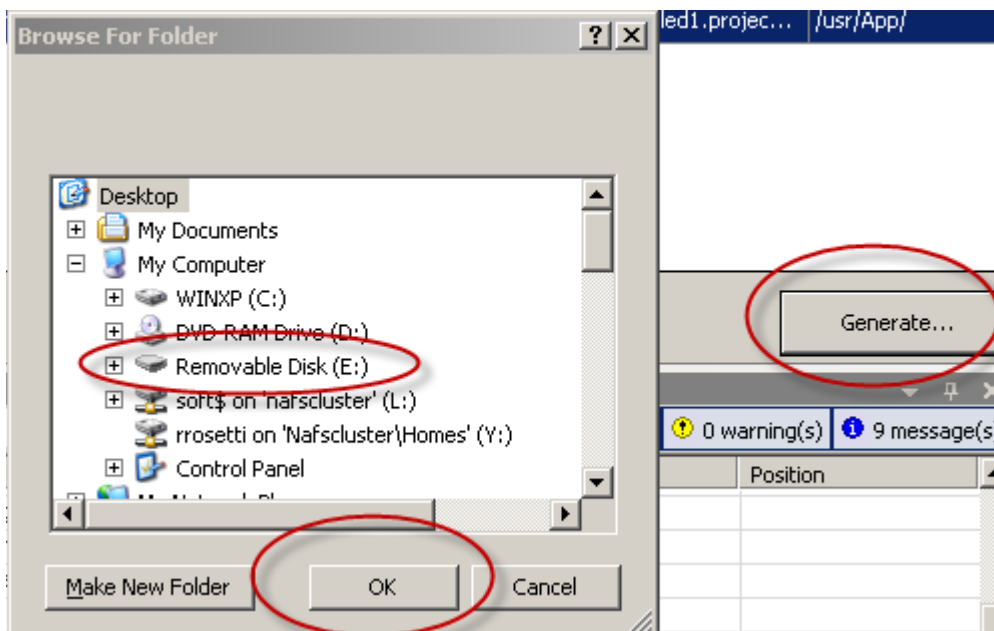
1. Insert an USB flash drive to your PC
2. Go to the **Program tab / Online / USB Mass Storage**. The **USB Mass Storage** editor lets you generate and copy the script and all necessary files into the USB memory key.



3. Click on **Macros / Download App**

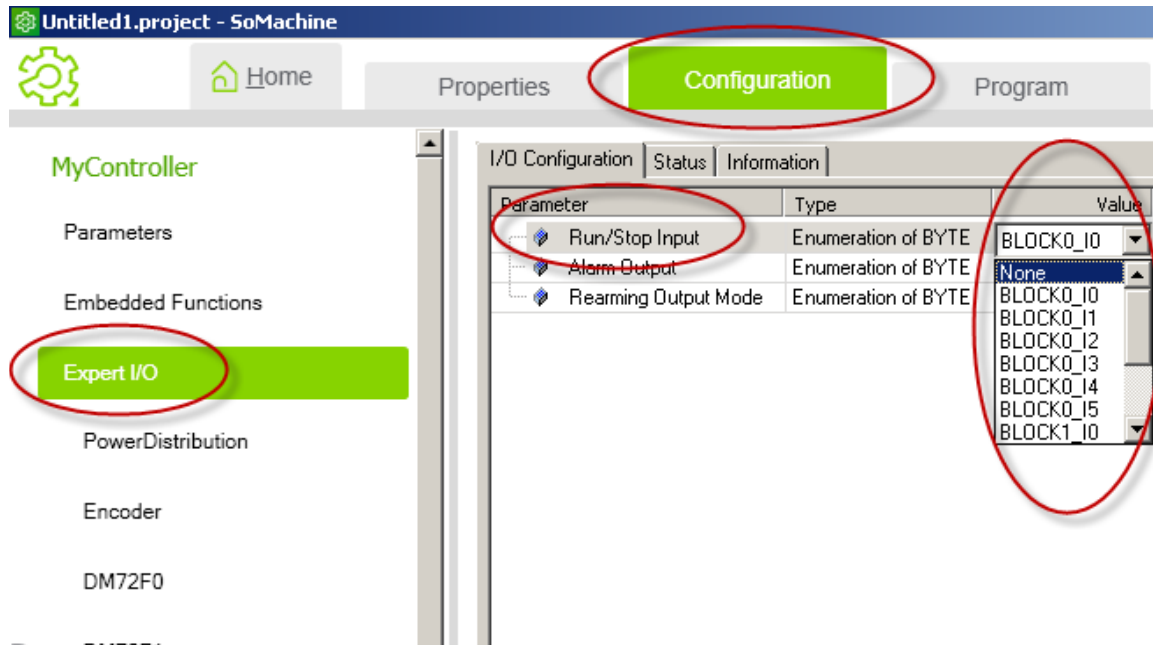


4. Click on **Generate** and select the USB flash drive root and then click on **OK** to generate the files.



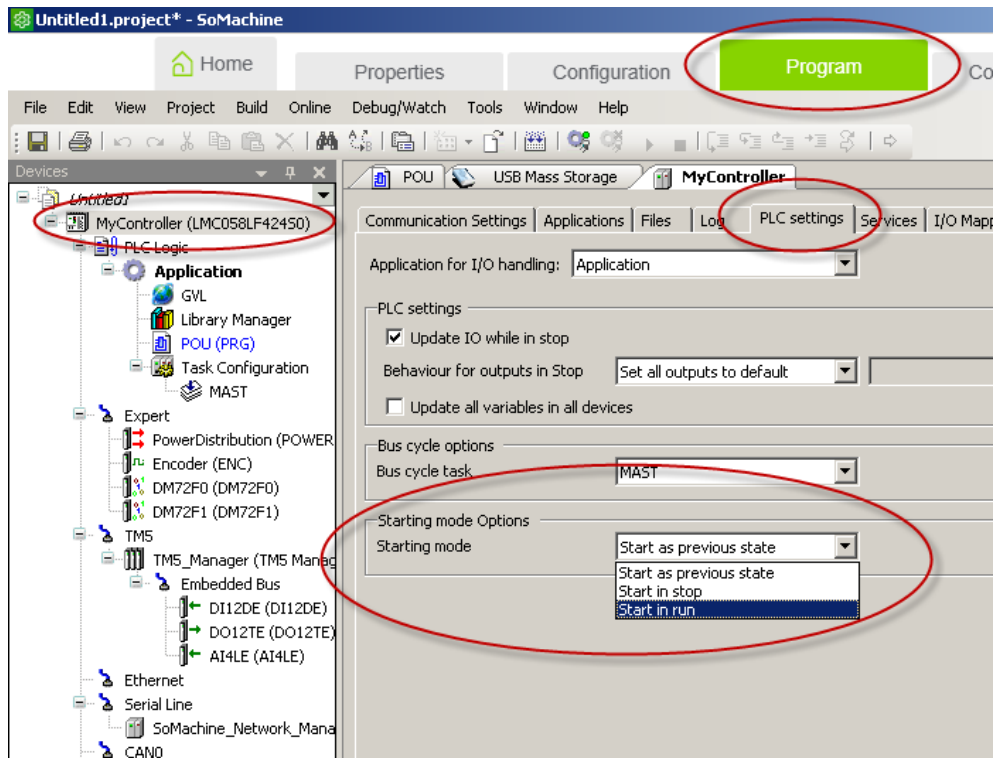
5. Plug the USB memory key into the controller. The USB LED will blink green during transfer. At the end of the transfer the USB LED is solid green. If an error was detected the LED is solid red. When the controller has executed the script, the result is logged on the USB memory key (file/sys/CMD/Command.log). The controller can be in RUNNING state during the download. It will not change the current program until a reboot or power cycle is performed.

6. After downloading the program using an USB flash drive, the PLC will go into the STOPPED state. The only way to put a M258 or a LMC058 in RUNNING state after downloading the application with an USB flash drive is to use a RUN/STOP input previously wired (you can use just a jumper) or to use SoMachine to issue a RUN command. To configure a RUN/ STOP input go to the **Configuration** tab, double-click on the controller and click on **Expert I/O**. Select an input for the **RUN/STOP Input**.



7. When a power interruption occurs, the controller continues in the RUNNING state for at least 4 ms before shutting down. If you have configured and provided power to the Run/Stop input from the same source as the controller, the loss of power to this input will be detected immediately, and the controller will behave as if a STOP command was received. Therefore, if you provide power to the controller and the Run/Stop input from the same source, your controller will normally reboot into the STOPPED state after a power interruption.

The only way to prevent this behavior when you have the same power supply is to modify the **Starting Mode** from the default **Start as previous state** to **Start in Run** (setting not available in SoMachine version 2)



This completes the step by step procedure on how to download a program to a M258 Logic Controller or LMC058 Motion Controller and put the controller into RUNNING state.